

# DRIVEN

by BATTAT®

TOUGH RIGS, REAL PLAY



CATALOGUE 2019

STANDARD

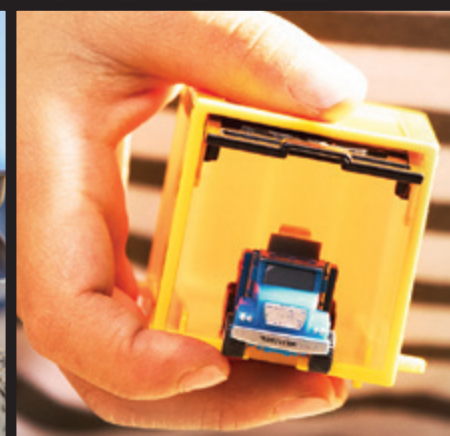
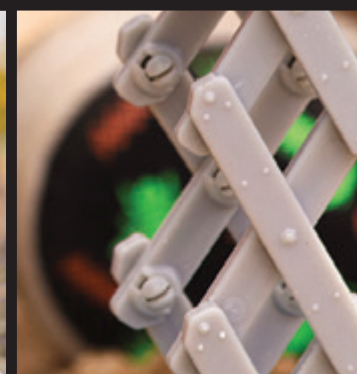
MIDRANGE

MICRO

POCKET

BUNDLES











## STANDARD



## MICRO



## POCKET





# THE FLEET

## STANDARD SERIES



WH1100 / WH1100Z	8 - 9
WH1020 / WH1020Z	10-11
WH1021 / WH1021Z	12-13
WH1000 / WH1000Z	14-15
WH1001 / WH1001Z	16-17
WH1002 / WH1002Z	18-19

## MIDRANGE SERIES



WH1110 / WH1110Z	22-23
WH1018 / WH1018Z	24-25
WH1004 / WH1004Z	26-27
WH1005 / WH1005Z	28-29

## MICRO SERIES



WH1016 / WH1016Z	32-33
WH1017 / WH1017Z	34-35
WH1072 / WH1072Z	36-37
WH1071 / WH1071Z	38-39
WH1073 / WH1073Z	40-41
WH1074 / WH1074Z	42-43
WH1006 / WH1006Z	44-45
WH1007 / WH1007Z	46-47
WH1008 / WH1008Z	48-49
WH1009 / WH1009Z	50-51
WH1010 / WH1010Z	52-53
WH1011 / WH1011Z	54-55
WH1012 / WH1012Z	56-57
WH1013 / WH1013Z	58-59
WH1014 / WH1014Z	60-61
WH1015 / WH1015Z	62-63
WH1103 / WH1103Z	64-65
WH1022 / WH1022Z	66-67
WH1023 / WH1023Z	68-69
WH1077 / WH1077Z	70-71

## POCKET SERIES



WH1102DIS	74-75
WH1075 / WH1075Z	76-77
WH1078 / WH1078Z	78-79
WH1079 / WH1079Z	80-81
WH1024G / WH1024GTZ	82-83
WH1070G / WH1070GTZ	84-85

## BUNDLES



WH1105 / WH1105Z	88-89
WH1106 / WH1106Z	90-91
WH1104 / WH1104Z	92-93

**MIDRANGE**











# RECYCLING TRUCK

**STANDARD SERIES**



**WH1100**

UPC: 0 62243 40403 8

Item dimensions: 21" x 8.25" x 10.60"  
(53.50 cm x 21 cm x 27 cm)

**4 years +**

**WH1100Z**

UPC: 0 62243 40404 5

Case Pack (pcs): 2

USES 4 x AAA (1.5V)  
batteries included



PRESS BUTTONS ON ROOF TO  
FLASH LIGHTS AND HEAR THE ENGINE

PRESS BUTTON ON STEERING WHEEL  
TO FLASH HEADLIGHTS

PRESS BUTTON ON STEERING WHEEL  
TO HEAR THE HORN

Packaging dimensions: 24" x 8.50" x 11"  
(61 cm x 22 cm x 28 cm)





## REALISTIC LIGHTS AND SOUNDS



**DOORS OPEN TO SHOW  
REALISTIC INTERIOR**



**LED LIGHTS**



**MECHANIZED LOADING  
RACK EMPTIES BINS**



**SLIDING WALL  
PUSHES RECYCLING OUT**



**SLIDING DOOR OPENS  
EXTRA COMPARTMENT**



**TILTING CAB  
REVEALS ENGINE**

# TOW TRUCK

**STANDARD SERIES**



**WH1020**

UPC: 0 62243 33252 2

Item dimensions: 21.13" x 7.85" x 8.50"  
(53.70 cm x 20 cm x 21.60 cm)

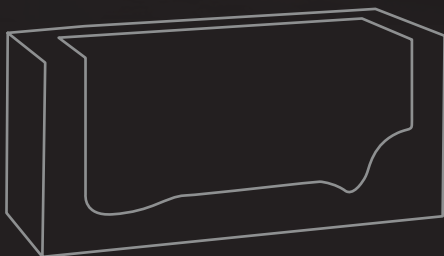
**4 years +**

**WH1020Z**

UPC: 0 62243 34956 8

Case Pack (pcs): 2

USES 3 x AA (1.5V)  
batteries included



Packaging dimensions: 24" x 8.50" x 11"  
(61 cm x 22 cm x 28 cm)

PRESS BUTTON ON FRONT OF ROOF  
TO FLASH LIGHTS AND HEAR THE ENGINE

PRESS BUTTON ON BACK OF ROOF  
TO TURN ON ROOF LIGHTS

PRESS BUTTON ON STEERING WHEEL  
TO FLASH HEADLIGHTS

PRESS BUTTON ON STEERING WHEEL  
TO HEAR THE HORN





## REALISTIC LIGHTS AND SOUNDS



**TOWING RACK  
CONNECTS TO CAR**



**TILTING RAMP  
TO LOAD CAR**



**FOLDING  
SUPPORT LEGS**



**CRANE ARM EXTENDS  
AND SWIVELS 360°**



**DOORS & HOOD OPEN**



**LED LIGHTS**

# CLEANING TRUCK

**STANDARD SERIES**



**WH1021**

UPC: 0 62243 33253 9

Item dimensions: 20.20" x 7.18" x 8.40"  
(51.30 cm x 18.25 cm x 21.35 cm)

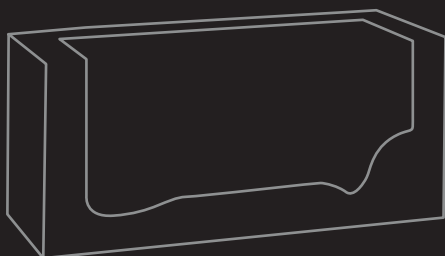
**4 years +**

**WH1021Z**

UPC: 0 62243 34958 2

Case Pack (pcs): 2

USES 3 x AA (1.5V)  
batteries included



Packaging dimensions: 24" x 8.50" x 11"  
(61 cm x 22 cm x 28 cm)

PRESS BUTTON ON FRONT OF ROOF  
TO FLASH LIGHTS AND HEAR THE ENGINE

PRESS BUTTON ON BACK OF ROOF  
TO TURN ON ROOF LIGHTS

PRESS BUTTON ON STEERING WHEEL  
TO FLASH HEADLIGHTS

PRESS BUTTON ON STEERING WHEEL  
TO HEAR THE HORN





## REALISTIC LIGHTS AND SOUNDS



**HATCH OPENS TO  
RELEASE CONTENTS**



**BRUSHES SPIN  
AS TRUCK ROLLS**



**LED LIGHTS**



**DOORS AND HOOD OPEN TO SHOW  
REALISTIC INTERIOR AND ENGINE**

# DUMP TRUCK

**STANDARD SERIES**



**WH1000**

UPC: 0 62243 28505 7

Item dimensions: 18.80" x 7.20" x 9.40"  
(47.75 cm x 18.30 cm x 24 cm)

**4 years +**

**WH1000Z**

UPC: 0 62243 31756 7

Case Pack (pcs): 2

USES 4 x AAA (1.5V)  
batteries included



PRESS BUTTONS ON ROOF TO  
FLASH LIGHTS AND HEAR THE ENGINE

PRESS BUTTON ON STEERING WHEEL  
TO FLASH HEADLIGHTS

PRESS BUTTON ON STEERING WHEEL  
TO HEAR THE HORN

Packaging dimensions: 24" x 8.50" x 11"  
(61 cm x 22 cm x 28 cm)





## REALISTIC LIGHTS AND SOUNDS



**HATCH OPENS TO  
RELEASE CONTENTS**



**TILTING CAB  
REVEALS ENGINE**



**LED LIGHTS**



**DUMPER TILTS BACK**

# FIRE TRUCK

**STANDARD SERIES**



**WH1001**

UPC: 0 62243 30148 1

Item dimensions: 19" x 6.70" x 9.85"  
(48.05 cm x 17 cm x 25 cm)

**4 years +**

**WH1001Z**

UPC: 0 62243 31758 1

Case Pack (pcs): 2

USES 4 x AAA (1.5V)  
batteries included



Packaging dimensions: 24" x 8.50" x 11"  
(61 cm x 22 cm x 28 cm)

PRESS BUTTONS ON ROOF TO  
FLASH LIGHTS AND HEAR SIREN AND ENGINE

PRESS BUTTON ON STEERING WHEEL  
TO FLASH HEADLIGHTS

PRESS BUTTON ON STEERING WHEEL  
TO HEAR THE HORN





## REALISTIC LIGHTS AND SOUNDS



**TILTING CAB  
REVEALS ENGINE**



**LEVER PUMPS WATER FROM  
TANK THROUGH FIRE HOSE**



**LED LIGHTS**



**FOLDING  
SUPPORT LEGS**

# CRANE TRUCK

## STANDARD SERIES



### WH1002

UPC: 0 62243 30149 8

Item dimensions: 18.25" x 6.70" x 10.25"  
(46.35 cm x 17 cm x 26 cm)

**4 years +**

### WH1002Z

UPC: 0 62243 31759 8

Case Pack (pcs): 2

USES 4 x AAA (1.5V)  
batteries included



Packaging dimensions: 24" x 8.50" x 11"  
(61 cm x 22 cm x 28 cm)

PRESS BUTTONS ON ROOF TO  
FLASH LIGHTS AND HEAR THE ENGINE

PRESS BUTTON ON STEERING WHEEL  
TO FLASH HEADLIGHTS

PRESS BUTTON ON STEERING WHEEL  
TO HEAR THE HORN





## REALISTIC LIGHTS AND SOUNDS



**4 STACKABLE  
TRAFFIC CONES**



**DOORS OPEN TO SHOW  
REALISTIC INTERIOR**



**FOLDING  
SUPPORT LEGS**



**TILTING CAB  
REVEALS ENGINE**



**CRANE PIVOTS UP AND DOWN,  
PLATFORM SWIVELS**



**LED LIGHTS**







# PICK-UP TRUCK

**MIDRANGE SERIES**



**WH1110**

UPC: 0 62243 41272 9

Item dimensions: 26" x 7.15" x 5.75"  
(66 cm x 18 cm x 14.55 cm)

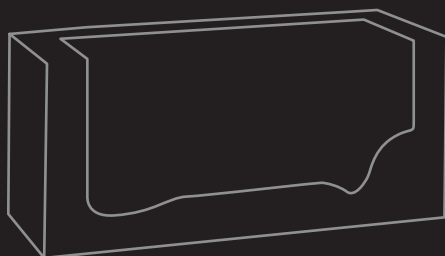
**4 years +**

**WH1110Z**

UPC: 0 62243 41273 6

Case Pack (pcs): 2

USES 2 x AA (1.5V)  
batteries included



Packaging dimensions: 18.25" x 8.50" x 8.50"  
(46.35 cm x 21.60 cm x 21.60 cm)

PRESS BUTTON ON DASHBOARD  
TO FLASH THE HEADLIGHTS  
AND HEAR THE ENGINE

PRESS BUTTON ON  
STEERING WHEEL  
TO HEAR THE HORN





## REALISTIC LIGHTS AND SOUNDS



**DOORS & HOOD OPEN TO SHOW  
REALISTIC INTERIOR AND ENGINE**



**TRAILER CONNECTS  
TO HITCH**



**LED LIGHTS**



**TRAILER'S RAMP PIVOTS UP  
AND DOWN TO OPEN & CLOSE**

# TELEHANDLER

## MIDRANGE SERIES



**WH1018**

UPC: 0 62243 33250 8

Item dimensions: 16.35" x 7.40" x 8.15"  
(41.50 cm x 18.80 cm x 20.65 cm)

**4 years +**

**WH1018Z**

UPC: 0 62243 33901 9

Case Pack (pcs): 2

USES 2 x AA (1.5V)  
batteries included



PRESS BUTTON TO HEAR  
HYDRAULIC LIFT SOUND  
AND ROOF LIGHT

Packaging dimensions: 18.25" x 8.50" x 8.50"  
(46.35 cm x 21.60 cm x 21.60 cm)



## REALISTIC LIGHT AND SOUNDS



**STORAGE COMPARTMENT  
DOOR OPENS**



**LED LIGHT**



**CRANE ARM PIVOTS, EXTENDS  
AND CABIN/CRANE BASE  
SWIVELS 360°**



**BASKET CONNECTS  
TO THE FORK**



# BULLDOZER

**MIDRANGE SERIES**



**WH1004**

UPC: 0 62243 30284 6

Item dimensions: 14.70" x 7.50" x 7.80"  
(37.35 cm x 19 cm x 19.80 cm)

**4 years +**

**WH1004Z**

UPC: 0 62243 31760 4

Case Pack (pcs): 2

USES 2 x AA (1.5V)  
batteries included



**PRESS BUTTON ON HOOD  
TO HEAR ENGINE SOUND**

Packaging dimensions: 18.25" x 8.50" x 8.50"  
(46.35 cm x 21.60 cm x 21.60 cm)



## REALISTIC SOUNDS



***RAKE PIVOTS  
UP AND DOWN***



***SHOVEL PIVOTS  
UP AND DOWN***

# BACKHOE LOADER

**MIDRANGE SERIES**



**WH1005**

UPC: 0 62243 30285 3

Item dimensions: 17.35" x 7.50" x 7.85"  
(44 cm x 19 cm x 20 cm)

**4 years +**

**WH1005Z**

UPC: 0 62243 31761 1

Case Pack (pcs): 2

USES 2 x AA (1.5V)  
batteries included



PRESS BUTTON ON HOOD  
TO HEAR ENGINE SOUND

Packaging dimensions: 18.25" x 8.50" x 8.50"  
(46.35 cm x 21.60 cm x 21.60 cm)





## REALISTIC SOUNDS



**DOORS OPEN TO SHOW  
REALISTIC INTERIOR**



**SHOVEL PIVOTS**



**FOLDING SUPPORT LEGS**



**REAR EXCAVATING ARM**







MICRO



# TELEHANDLER

## MICRO SERIES



### WH1016

UPC: 0 62243 32370 4

Item dimensions: 5.8" x 2.9" x 3.15"  
(14.75 cm x 7.40 cm x 8 cm)

**4 years +**

### WH1016Z

UPC: 0 62243 34898 1

Case Pack (pcs): 6

USES 3 x AG13 (1.5V)  
batteries included



PRESS ON ROOF  
FOR LIGHT & HYDRAULIC  
LIFT SOUND

Packaging dimensions: 9" x 4" x 4"  
(22.85 cm x 10.15 cm x 10.15 cm)



## REALISTIC LIGHTS AND SOUNDS



**CABIN AND CRANE BASE  
SWIVEL 360°**



**LED LIGHT**



**PALLET AND BASKET  
CONNECT TO FORK**



**EXTENDING CRANE ARM  
PIVOTS UP AND DOWN**



# PICK-UP TRUCK

## MICRO SERIES



**WH1017**

UPC: 0 62243 32371 1

Item dimensions: 6.5" x 3" x 3"  
(16.50 cm x 7.60 cm x 7.60 cm)

**4 years +**

**WH1017Z**

UPC: 0 62243 34453 2

Case Pack (pcs): 6

USES 3 x AG13 (1.5V)  
batteries included



PRESS ON ROOF  
TO TURN ON LIGHTS,  
REV THE ENGINE AND  
HONK THE HORN

Packaging dimensions: 9" x 4" x 4"  
(22.85 cm x 10.15 cm x 10.15 cm)



## REALISTIC LIGHTS AND SOUNDS



**DOORS OPEN TO SHOW  
REALISTIC INTERIOR**



**REAR HATCH OPENS AND  
RAMPS SLIDE OUT TO LOAD ATV**



**HOOD OPENS  
TO REVEAL ENGINE**



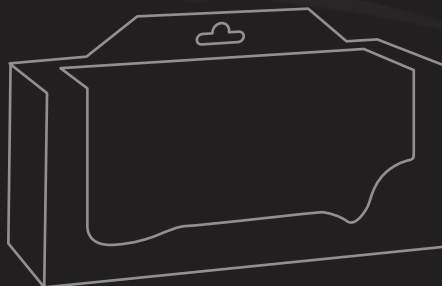
**LED LIGHTS**

# HELICOPTER

**MICRO SERIES**



<b>WH1072</b> UPC: 0 62243 34499 0	Item dimensions: 8.19" x 1.65" x 2.76" (20.80 cm x 4.19 cm x 7 cm)	<b>4 years +</b>
<b>WH1072Z</b> UPC: 0 62243 34960 5	Case Pack (pcs): 6	USES 3 x AG13 (1.5V) batteries included



Packaging dimensions: 9" x 4" x 4"  
(22.85 cm x 10.15 cm x 10.15 cm)

PRESS LEFT EXHAUST FOR  
LIGHT & HELICOPTER  
ENGINE SOUND

PRESS RIGHT EXHAUST  
TO SPIN THE PROPELLER





## REALISTIC LIGHTS AND SOUND



**DOORS OPEN**



**PRESS THE RIGHT EXHAUST  
TO SPIN THE PROPELLER**



**LED LIGHTS**

# TRACTOR

## MICRO SERIES



**WH1071**

UPC: 0 62243 344914

Item dimensions: 8" x 2.65" x 3.1"  
(20.30 cm x 6.75 cm x 7.90 cm)

**4 years +**

**WH1071Z**

UPC: 0 62243 34959 9

Case Pack (pcs): 6

USES 3 x AG13 (1.5V)  
batteries included



PRESS BUTTON ON HOOD  
TO TURN ON LIGHTS AND  
HEAR THE ENGINE SOUND

Packaging dimensions: 9" x 4" x 4"  
(22.85 cm x 10.15 cm x 10.15 cm)



## REALISTIC LIGHTS AND SOUND



**TRAILER ATTACHES  
TO TRACTOR**



**TRAILER'S  
REAR HATCH OPENS**



**LED LIGHTS**



# FLAT BED TRUCK

## MICRO SERIES



**WH1073**

UPC: 0 62243 34683 3

Item dimensions: 8.30" x 2.75" x 3"  
(21 cm x 6.98 cm x 7.62 cm)

**4 years +**

**WH1073Z**

UPC: 0 62243 34961 2

Case Pack (pcs): 6

USES 3 x AG13 (1.5V)  
batteries included



PRESS ON ROOF  
TO TURN ON LIGHTS,  
REV THE ENGINE AND  
HONK THE HORN

Packaging dimensions: 9" x 4" x 4"  
(22.85 cm x 10.15 cm x 10.15 cm)



## REALISTIC LIGHTS AND SOUNDS



**DOORS OPEN TO SHOW  
REALISTIC INTERIOR**



**RAMPS OPEN  
TO LOAD TRACTOR**



**HOOD OPENS  
TO REVEAL ENGINE**



**LED LIGHTS**

# SCISSOR LIFT TRUCK

**MICRO SERIES**



**WH1074**

UPC: 0 62243 34684 0

Item dimensions: 6.95" x 3" x 3.20"  
(17.65 cm x 7.60 cm x 8.15 cm)

**4 years +**

**WH1074Z**

UPC: 0 62243 34963 6

Case Pack (pcs): 6

USES 3 x AG13 (1.5V)  
batteries included



PRESS ON ROOF  
TO TURN ON LIGHTS,  
REV THE ENGINE AND  
HONK THE HORN

Packaging dimensions: 9" x 4" x 4"  
(22.85 cm x 10.15 cm x 10.15 cm)





## REALISTIC LIGHTS AND SOUNDS



**DOORS OPEN TO SHOW  
REALISTIC INTERIOR**



**TURN THE CRANK TO RAISE  
AND LOWER THE BASKET**



**HOOD OPENS  
TO REVEAL ENGINE**



**LED LIGHTS**

# DUMP TRUCK

## MICRO SERIES



**WH1006**

UPC: 0 62243 30709 4

Item dimensions: 7" x 3.20" x 3"  
(17.80 cm x 8.15 cm x 7.60 cm)

**4 years +**

**WH1006Z**

UPC: 0 62243 31762 8

Case Pack (pcs): 6

USES 3 x AG13 (1.5V)  
batteries included



PRESS ON ROOF TO  
TURN ON HEADLIGHTS,  
REV THE ENGINE AND  
HONK THE HORN

Packaging dimensions: 9" x 4" x 4"  
(22.85 cm x 10.15 cm x 10.15 cm)



## REALISTIC LIGHTS AND SOUNDS



**DOORS OPEN TO SHOW  
REALISTIC INTERIOR**



**CONTAINER TILTS  
AND HATCH OPENS**



**HOOD OPENS  
TO REVEAL ENGINE**



**LED LIGHTS**



# FIRE TRUCK

## MICRO SERIES



**WH1007**

UPC: 0 62243 30712 4

Item dimensions: 7.50" x 3.25" x 3.75"  
(19.10 cm x 8.50 cm x 9.60 cm)

**4 years +**

**WH1007Z**

UPC: 0 62243 31765 9

Case Pack (pcs): 6

USES 3 x AG13 (1.5V)  
batteries included



PRESS ON ROOF TO  
TURN ON HEADLIGHTS,  
REV THE ENGINE AND  
HEAR THE SIREN

Packaging dimensions: 9" x 4" x 4"  
(22.85 cm x 10.15 cm x 10.15 cm)



## REALISTIC LIGHTS AND SOUNDS



**DOORS OPEN TO SHOW  
REALISTIC INTERIOR**



**RETRACTING  
SUPPORT LEGS**



**LED LIGHTS**



**EXTENDABLE  
LADDER SWIVELS**

# TOW TRUCK

## MICRO SERIES



**WH1008**

UPC: 0 62243 30713 1

Item dimensions: 8.12" x 3" x 3.12"  
(20.63 cm x 7.62 cm x 7.93 cm)

**4 years +**

**WH1008Z**

UPC: 0 62243 31766 6

Case Pack (pcs): 6

USES 3 x AG13 (1.5V)  
batteries included



PRESS ON ROOF TO  
TURN ON HEADLIGHTS,  
REV THE ENGINE AND  
HONK THE HORN

Packaging dimensions: 9" x 4" x 4"  
(22.85 cm x 10.15 cm x 10.15 cm)





## REALISTIC LIGHTS AND SOUNDS



**TOWING HOOK PULLS ANY  
DRIVEN MICRO VEHICLE**



**LED LIGHTS**



**HOOD OPENS  
TO REVEAL ENGINE**



**RAMP AND PULLEY SYSTEM  
LOADS CAR TO PLATFORM**

# BACKHOE LOADER

## MICRO SERIES



### WH1009

UPC: 0 62243 30714 8

Item dimensions: 7.12" x 3.25" x 3.37"  
(18.08 cm x 8 cm x 8.5 cm)

**4 years +**

### WH1009Z

UPC: 0 62243 31767 3

Case Pack (pcs): 6

USES 3 x AG13 (1.5V)  
batteries included



PRESS ON ROOF TO  
REV THE ENGINE

Packaging dimensions: 9" x 4" x 4"  
(22.85 cm x 10.15 cm x 10.15 cm)



## REALISTIC SOUNDS



**FRONT LOADING  
SHOVEL SCOOPS**



**REAR DIGGING  
ARM SWIVELS**



**FOLDING  
SUPPORT LEGS**



# RECYCLING TRUCK

**MICRO SERIES**



**WH1010**

UPC: 0 62243 30715 5

Item dimensions: 7.50" x 3.20" x 3.50"  
(19 cm x 8.15 cm x 8.80 cm)

**4 years +**

**WH1010Z**

UPC: 0 62243 31768 0

Case Pack (pcs): 6

USES 3 x AG13 (1.5V)  
batteries included



PRESS ON ROOF TO  
TURN ON HEADLIGHTS,  
REV THE ENGINE AND  
HONK THE HORN

Packaging dimensions: 9" x 4" x 4"  
(22.85 cm x 10.15 cm x 10.15 cm)



## REALISTIC LIGHTS AND SOUNDS



**PUSH BUTTON  
PIVOTS LOADER**



**HOOD OPENS  
TO REVEAL ENGINE**



**LED LIGHTS**



**TILT CONTAINER TO  
EMPTY RECYCLABLES**

# CRANE TRUCK

**MICRO SERIES**



**WH1011**

UPC: 0 62243 30716 2

Item dimensions: 7.50" x 3.25" x 3.80"  
(19 cm x 8.25 cm x 9.60 cm)

**4 years +**

**WH1011Z**

UPC: 0 62243 31769 7

Case Pack (pcs): 6

USES 3 x AG13 (1.5V)  
batteries included



PRESS ON ROOF TO  
TURN ON HEADLIGHTS,  
REV THE ENGINE AND  
HONK THE HORN

Packaging dimensions: 9" x 4" x 4"  
(22.85 cm x 10.15 cm x 10.15 cm)





## REALISTIC LIGHTS AND SOUNDS



**FOLDING  
SUPPORT LEG**



**HOOD OPENS  
TO REVEAL ENGINE**



**EXTENDABLE CRANE SWIVELS  
WITH RETRACTABLE HOOK**



**LED LIGHTS**

# BULLDOZER

## MICRO SERIES



<b>WH1012</b> UPC: 0 62243 32303 2	Item dimensions: 6.50" x 3.50" x 3.70" (16.51 cm x 8.89 cm x 9.398 cm)	<b>4 years +</b>
<b>WH1012Z</b> UPC: 0 62243 33131 0	Case Pack (pcs): 6	USES 3 x AG13 (1.5V) batteries included



PRESS BUTTON ON HOOD  
TO HEAR ENGINE SOUND

Packaging dimensions: 9" x 4" x 4"  
(22.85 cm x 10.15 cm x 10.15 cm)



## REALISTIC SOUND



**RAKE PIVOTS  
UP AND DOWN**



**SHOVEL PIVOTS UP, DOWN  
AND SIDE TO SIDE**



# LOGGING TRUCK

**MICRO SERIES**



**WH1013**

UPC: 0 62243 32339 1

Item dimensions: 7.38" x 3" x 3.05"  
(18.71 cm x 7.62 cm x 7.75 cm)

**4 years +**

**WH1013Z**

UPC: 0 62243 33132 7

Case Pack (pcs): 6

USES 3 x AG13 (1.5V)  
batteries included



PRESS ON ROOF TO  
TURN ON HEADLIGHTS,  
REV THE ENGINE AND  
HONK THE HORN

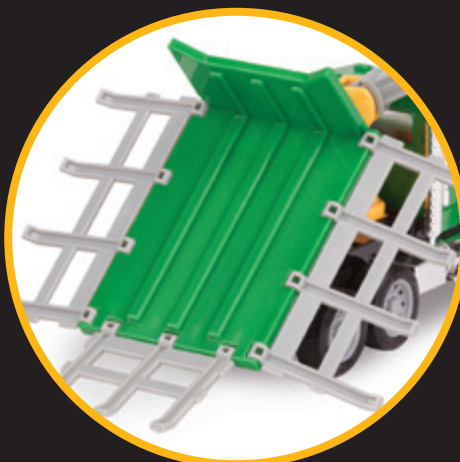
Packaging dimensions: 9" x 4" x 4"  
(22.85 cm x 10.15 cm x 10.15 cm)



## REALISTIC LIGHTS AND SOUNDS



**EXTENDABLE CRANE SWIVELS  
HOOK TO LOAD AND UNLOAD LOGS**



**TILTING FLATBED AND  
FOLD DOWN GATES**



**HOOD OPENS  
TO REVEAL ENGINE**



**LED LIGHTS**

# CEMENT MIXER

**MICRO SERIES**



**WH1014**

UPC: 0 62243 32340 7

Item dimensions: 7.36" x 3" x 3.75"  
(18.69 cm x 7.62 cm x 9.52 cm)

**4 years +**

**WH1014Z**

UPC: 0 62243 33133 4

Case Pack (pcs): 6

USES 3 x AG13 (1.5V)  
batteries included



PRESS BUTTON BEHIND  
REAR WINDOW FOR ROOF LIGHTS  
AND STEAM ROLLER SOUND

Packaging dimensions: 9" x 4" x 4"  
(22.85 cm x 10.15 cm x 10.15 cm)





## REALISTIC LIGHTS AND SOUNDS



**TURN CRANK TO  
ROTATE MIXER**



**MAIN CHUTE  
ROTATES SIDE TO SIDE**



**HOOD OPENS  
TO REVEAL ENGINE**



**LED LIGHTS**

# STEAM ROLLER

**MICRO SERIES**



<b>WH1015</b> UPC: 0 62243 32369 8	Item dimensions: 7" x 2.9" x 3.25" (18.69 cm x 7.62 cm x 9.52 cm)	<b>4 years +</b>
<b>WH1015Z</b> UPC: 0 62243 33134 1	Case Pack (pcs): 6	USES 3 x AG13 (1.5V) batteries included



PRESS BUTTON BEHIND  
REAR WINDOW FOR ROOF LIGHTS  
AND STEAM ROLLER SOUND

Packaging dimensions: 9" x 4" x 4"  
(22.85 cm x 10.15 cm x 10.15 cm)



## REALISTIC LIGHTS AND SOUNDS



**LED LIGHTS**



**ROLLER PIVOTS  
SIDE TO SIDE**



# MICRO FLEET

## MICRO SERIES



## 4 MICRO TRUCKS

## REALISTIC LIGHTS AND SOUNDS



<b>WH1103</b> UPC: 0 62243 40418 2	Packaging dimensions: 19.5" x 4" x 11" (49.53 cm x 10.16 cm x 27.94 cm)	<b>4 years +</b>
<b>WH1103Z</b> UPC: 0 62243 40419 9	Case Pack (pcs): 4	USES 12 x AG13 (1.5V) batteries included



**CRANE  
TRUCK**



**FIRE  
TRUCK**

**LOGGING  
TRUCK**



**TOW  
TRUCK**

# CONSTRUCTION CRANE PLAYSET

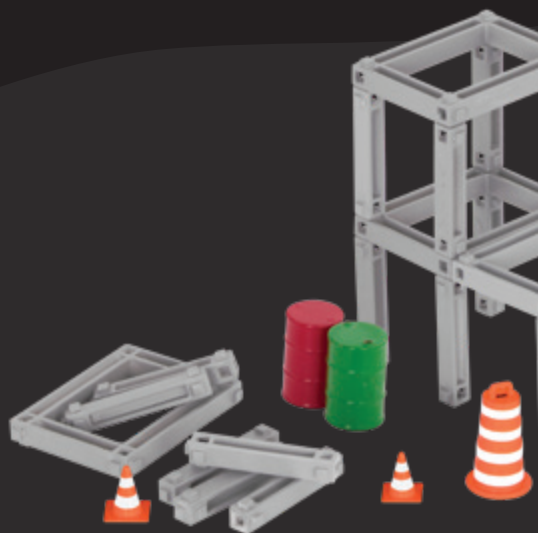
## MICRO SERIES PLAY SETS

<b>WH1022</b> UPC: 0 62243 33254 6	Packaging dimensions: 21" x 3.75" x 14.5" (53.34 cm x 9.52 cm x 36.83 cm)	<b>4 years +</b>
<b>WH1022Z</b> UPC: 0 62243 33903 3	Case Pack (pcs): 2	USES 3 x AG13 (1.5v) batteries included

**62**  
PIECES



- CRANE SWIVELS 360 DEGREES
- CRANE CRANK TURNS TO WIND AND UNWIND ROPE
- CRANE ACCESSORIES INCLUDE: HAND BUCKET, MACHINE BUCKET WITH TRAP DOOR & LIFT RACK
- STRUCTURAL BEAMS CONNECT TO BUILD A FRAME







## REALISTIC LIGHTS AND SOUNDS



**CAB TILTS TO  
REVEAL ENGINE**



**DOORS OPEN TO SHOW  
REALISTIC INTERIOR**



**LED LIGHTS**



# BRIDGE CONSTRUCTION PLAYSET

## MICRO SERIES PLAY SETS

**WH1023**

UPC: 0 62243 33255 3

Packaging dimensions: 21" x 3.75" x 14.5"

**4 years +**

**WH1023Z**

UPC: 0 62243 33904 0

Case Pack (pcs): 2

USES 3 x AG13 (1.5V)  
batteries included

**EXCLUSIVE  
DUMP TRUCK**  
ONLY FOUND IN  
THIS SET



MORE TO  
COLLECT





## REALISTIC LIGHTS AND SOUNDS



**CAB TILTS  
TO REVEAL ENGINE**



**DOORS OPEN TO SHOW  
REALISTIC INTERIOR**



**LED LIGHTS**

- LIFT BRIDGE PARTS USING THE CRANE TRUCK
- BRIDGE PARTS ARE EASY TO ASSEMBLE
- BUILD A BRIDGE THAT WILL LAST

**35  
PIECES**





# AIRPORT PLAYSET

## MICRO SERIES PLAY SETS

**WH1077**

UPC: 0 62243 34840 0

Packaging dimensions: 21" x 3.75" x 14.5"  
(53.34 cm x 9.52 cm x 36.83 cm)

**4 years +**

**WH1077Z**

UPC: 0 62243 35592 7

Case Pack (pcs): 2

USES 3 x AG13 (1.5v)  
batteries included

BUILD YOUR TERMINAL BY ASSEMBLING THE SUPPORT STRUCTURE,  
THE RAMPS, AND THE CONTROL TOWER

CONNECT THE LUGGAGE TRAILER TO THE TOWING VEHICLE  
TO LOAD AND CARRY LUGGAGE

BOARDING STAIRS CONNECT TO THE TOWING VEHICLE  
AND TO THE AIRPLANE DOOR

GAS PUMP NOZZLE CONNECTS TO THE AIRPLANE  
AND TO THE TOWING VEHICLE FOR REFUELING

**32**  
PIECES





## REALISTIC LIGHTS AND SOUNDS



**LANDING GEAR  
RETRACTS**



**PLANE DOOR OPENS  
AND CONNECTS TO  
BOARDING STAIRS**



**WINGS LIGHTS AND  
TAKEOFF AND LANDING  
SOUNDS!**











# SHELF DISPLAY

**POCKET SERIES**

A WINDOW INTO THE WORLD  
OF DRIVEN'S POCKET SERIES



**WH1102DIS**

UPC: 0 62243 40408 3

Item dimensions: 24" x 4" x 3.15"  
(60.96 cm x 10.16 cm x 8 cm)

**4 years +**

Case Pack (pcs): 1





CUSTOMERS CAN SEE HOW  
THE DIFFERENT SETS CONNECT AND  
OFFER ENDLESS SET UP POSSIBILITIES



# DINE & DRIVE PIT STOP

**POCKET SERIES**

**EXCLUSIVE  
FOOD TRUCK**

ONLY FOUND IN THIS SET



**WH1075**

UPC: 0 62243 34685 7

Item dimensions: 8" x 4" x 11"  
(20.32 cm x 10.16 cm x 27.94 cm)

**4 years +**

**WH1075Z**

UPC: 0 62243 41014 5

Case Pack (pcs): 3



- RAMPS TO DRIVE AROUND THE SET
- TRACKS ARE COMPATIBLE WITH OTHER POCKET SERIES PLAYSETS
- DOORS OPEN FOR TRUCKS TO DRIVE THROUGH

Packaging dimensions: 8.5" x 4" x 11"  
(21.59 cm x 10.16 cm x 27.94 cm)



## MANY FUN FEATURES ON EVERY CORNER



**RAMPS TO DRIVE  
AROUND THE SET**



**DOORS OPEN FOR  
TRUCKS TO DRIVE THROUGH**



**TRACKS ARE COMPATIBLE WITH  
OTHER POCKET SERIES PLAYSETS**

# SAFE & CLEAN CITY CREW

**POCKET SERIES**

**57**  
PIECES

**NEW!**  
**BRIDGE TRACKS**

**MORE TO  
COLLECT**



**WH1078**

UPC: 0 62243 35453 1

Packaging dimensions: 10" x 2" x 7"  
(25.40 cm x 5.08 cm x 17.78 cm)

**4 years +**

**WH1078Z**

UPC: 0 62243 35454 8

Case Pack (pcs): 3



- 6 CITY VEHICLES AND 9 ROAD SIGNS
- 42 EASY-TO-CONNECT TRACKS
- NEW! BRIDGE TRACKS





# CONSTRUCTION CREW

**POCKET SERIES**

**57**  
PIECES



**WH1079**

UPC: 0 62243 35456 2

Packaging dimensions: 10" x 2" x 7"  
(25.40 cm x 5.08 cm x 17.78 cm)

**4 years +**

**WH1079Z**

UPC: 0 62243 35455 5

Case Pack (pcs): 3



- 6 CITY VEHICLES AND 9 ROAD SIGNS
- 42 EASY-TO-CONNECT TRACKS
- NEW! BRIDGE TRACKS





# POCKET SERIES

## SERIES 1



ACTUAL SIZE



**WH1024G**

UPC: 0 62243 33256 0

Item dimensions: 1.70" x 2.30" x 1.65"  
(4.30 cm x 5.6 cm x 4.15 cm)

**4 years +**

**WH1024GTZ**

UPC: 0 62243 34508 9

Case Pack (pcs): 40



PDO dimensions: 10" x 9" x 1.70"  
(25 cm x 23 cm x 4.30 cm)



Packaged dimensions: 1.70" x 2.30" x 1.65"  
(4.30 cm x 5.6 cm x 4.15 cm)



## 21 STYLES TO COLLECT



EACH SET COMES WITH 3 ASSORTED TRACKS



3 WAY  
INTERSECTION



4 WAY  
INTERSECTION



CURVED



STRAIGHT



EXTENTIONS

# POCKET SERIES

## SERIES 2



ACTUAL SIZE



**WH1070G**

UPC: 0 62243 34263 7

Item dimensions: 1.70" x 2.30" x 1.65"  
(4.30 cm x 5.6 cm x 4.15 cm)

**4 years +**

**WH1070GTZ**

UPC: 0 62243 34908 7

Case Pack (pcs): 40



PDQ dimensions: 10" x 9" x 1.70"  
(25 cm x 23 cm x 4.30 cm)



Packaging dimensions: 1.70" x 2.30" x 1.65"  
(4.30 cm x 5.6 cm x 4.15 cm)





## 24 STYLES TO COLLECT



EACH SET COMES WITH 3 ASSORTED TRACKS / ROAD SIGNS



3 WAY  
INTERSECTION



4 WAY  
INTERSECTION



CURVED



STRAIGHT



EXTENTIONS









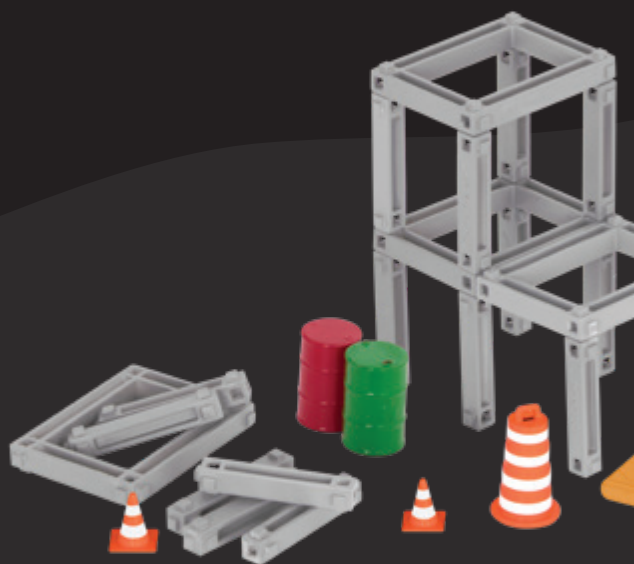
# CONSTRUCTION CRANE PLAYSET

**MICRO SERIES PLAY SETS**

**DELUXE**

**66** PCS  
**4 VEHICLES**  
INCLUDED

<b>WH1105</b> UPC: 0 62243 40838 8	Packaging dimensions: 15.75" x 3.5" x 16.54" (40 cm x 9 cm x 42 cm)	<b>4 years +</b>
<b>WH1105Z</b> UPC: 0 62243 41293 4	Case Pack (pcs): 1	USES 12 x AG13 (1.5v) batteries included



- CRANE SWIVELS 360 DEGREES
- CRANE CRANK TURNS TO WIND AND UNWIND ROPE
- CRANE ACCESSORIES INCLUDE: HAND BUCKET, MACHINE BUCKET WITH TRAP DOOR & LIFT RACK
- STRUCTURAL BEAMS CONNECT TO BUILD A FRAME



## REALISTIC LIGHTS AND SOUNDS



## MICRO SERIES PLAY SETS

**39** PCS  
**4 VEHICLES**  
INCLUDED







## REALISTIC LIGHTS AND SOUNDS



### WH1106

UPC: 0 62243 40839 5

Packaging dimensions: 23" x 16.75" x 4.75"  
(58.42 cm x 42.55 cm x 12.07 cm)

**4 years +**

### WH1106Z

UPC: 0 62243 41398 6

Case Pack (pcs): 1

USES 12 x AG13 (1.5V)  
batteries included

- LIFT BRIDGE PARTS USING THE CRANE TRUCK
- BRIDGE PARTS ARE EASY TO ASSEMBLE
- BUILD A BRIDGE THAT WILL LAST



# AIRPORT PLAYSET

**MICRO SERIES PLAY SETS**

**DELUXE**

**38** pcs  
**4 VEHICLES**  
INCLUDED

<b>WH1104</b> UPC: 0 62243 40837 1	Packaging dimensions: 23" x 4.72" x 16.75" (58.42 cm x 11.99 cm x 42.55 cm)	<b>4 years +</b>
<b>WH1104Z</b> UPC: 0 62243 41140 1	Case Pack (pcs): 1	USES 12 x AG13 (1.5v) batteries included

BUILD YOUR TERMINAL BY ASSEMBLING THE SUPPORT STRUCTURE,  
THE RAMPS, AND THE CONTROL TOWER

CONNECT THE LUGGAGE TRAILER TO THE TOWING VEHICLE  
TO LOAD AND CARRY LUGGAGE

BOARDING STAIRS CONNECT TO THE TOWING VEHICLE  
AND TO THE AIRPLANE DOOR

GAS PUMP NOZZLE CONNECTS TO THE AIRPLANE  
AND TO THE TOWING VEHICLE FOR REFUELING





## REALISTIC LIGHTS AND SOUNDS











# DRIVEN

by BATTAT

TOUGH RIGS, REAL PLAY

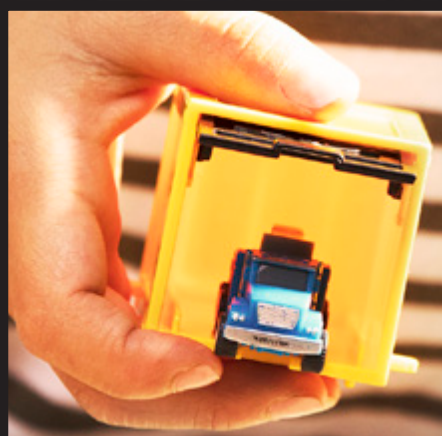






**ARE YOU DRIVEN? WE'RE ALL  
ABOUT TOUGH TRUCKS  
AND WORK VEHICLES THAT ARE  
TAKING PLAY TO NEW PLACES.  
CARRYING LOADS OF IMAGINATION  
AND DELIVERING TONS OF FUN,  
DRIVEN BY BATTAT® IS DESIGNED WITH  
WORKING COMPONENTS TO  
ENCOURAGE DISCOVERY! THESE  
MACHINES DON'T JUST LOOK COOL,  
THEY ALSO HAVE AMAZING FUNCTIONS.  
OPEN THE DOOR, FIRE UP THE ENGINE,  
TURN ON THE HEADLIGHTS  
AND GET GOING!**

**DRIVEN** by BATTAT®









**BECAUSE THE CREW DEPENDS ON YOU.**



© 2019 Maison Battat INC.  
MAISON BATTAT INC.,  
8440 DARNLEY ROAD, MONTREAL, P.Q., H4T 1M4  
sales@battatco.com  
Visit us at [www.MyDriven.com](http://www.MyDriven.com)

DRIVEN by Battat® is a registered trademark of Maison Battat INC.  
Printed in Hong Kong.

#driventoys  driventoys  driventoys