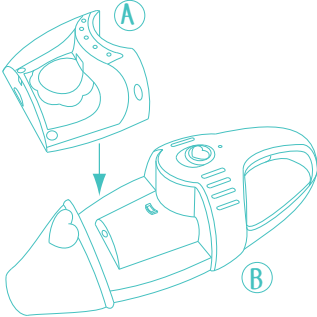


Components

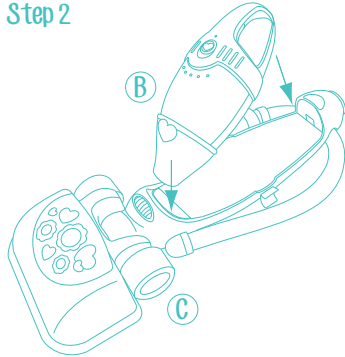


Assemble

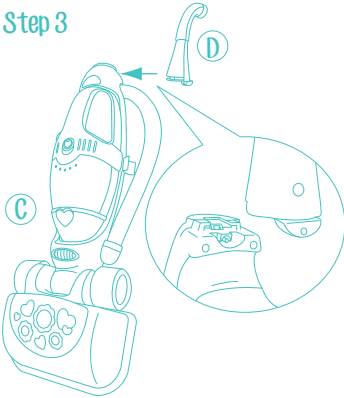
Step 1



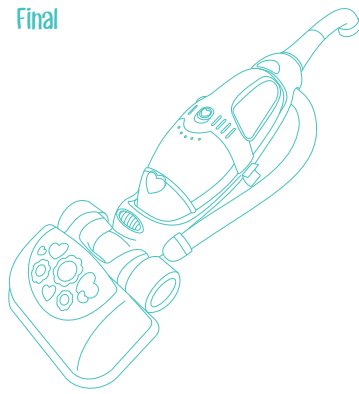
Step 2



Step 3

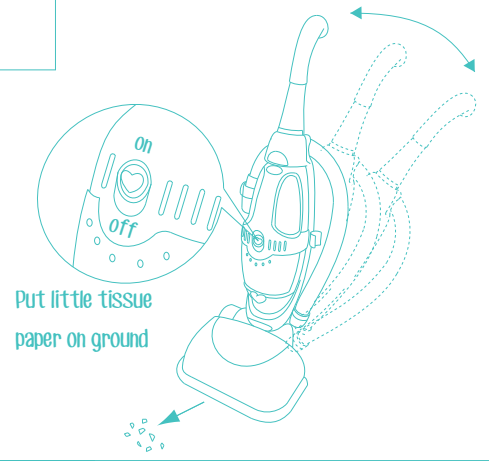


Final



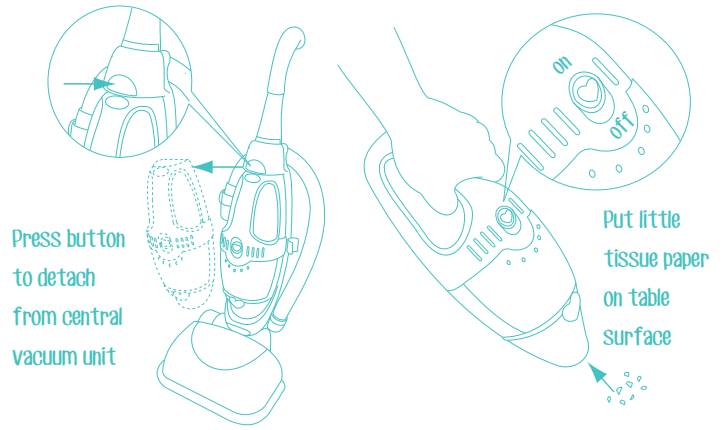
How to play

Playing with main unit



Put little tissue paper on ground

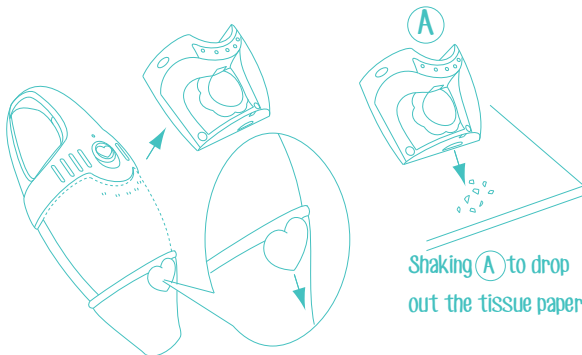
Playing with hand held unit



Press button to detach from central vacuum unit

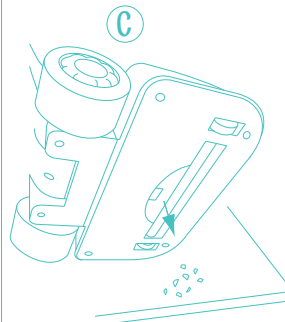
Put little tissue paper on table surface

For Cleaning (A,C)



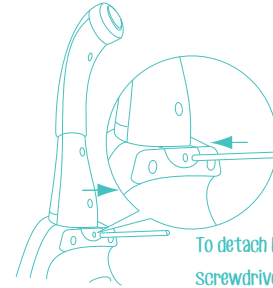
Shaking (A) to drop out the tissue paper

Push once to release the dust cup, power will turn off automatically



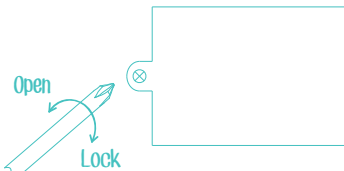
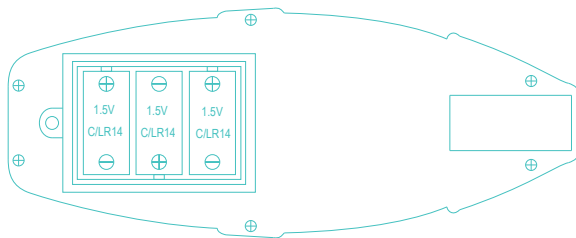
Shaking (C) to drop out the tissue paper

For storage



To detach handle, use small screwdriver as indicated.

- a) Take out batteries if long storage is required.
- b) Handle (D) can be detached as shown for smaller storage space.



Open battery compartments with Phillips screwdriver (not included)

- ⚠ CAUTION:**
- 3 "C" size (1.5v) batteries not included
 - Do not mix old and new batteries.
 - Do not mix alkaline, standard (carbon-zinc), or rechargeable(nickel-cadmium) batteries.
 - Turn off the unit when not in use.

This device complies with Part 15 of the FCC Rules. Operation is subject to the following two conditions: (1) this device may not cause harmful interference, and (2) this device must accept any interference received, including interference that may cause undesired operation. Caution: changes or modifications not expressly approved by the party responsible for compliance could void the user's authority to operate the equipment.

NOTE: This equipment has been tested and found to comply with the limits for a Class B digital device, pursuant to Part 15 of the FCC Rules. These limits are designed to provide reasonable protection against harmful interference in a residential installation. This equipment generates, uses and can radiate radio frequency energy and, if not installed and used in accordance with the instructions, may cause harmful interference to radio communications. However, there is no guarantee that interference will not occur in a particular installation. If this equipment does cause harmful interference to radio or television reception, which can be determined by turning the equipment off and on, the user is encouraged to try to correct the interference by one or more of the following measures:

- Reorient or relocate the receiving antenna.
- Increase the separation between the equipment and receiver.
- Connect the equipment into an outlet on a circuit different from that to which the receiver is connected.
- Consult the dealer or an experienced radio/TV technician for help.